



Drivers Guide for Linde Gas Cylinders

Unterschleißheim, 10.11.2020

Required loading equipment:

- 1. Curtainsider with intact tarpaulin, multilock or intact lashing points.**
- 2. In the case of transport of dangerous goods, the vehicle must have ventilation shafts or a ventilation system**
- 3. Minimum 26 safety straps per vehicle (2 belts for 2 pallets or bundles)**
- 4. Full ADR equipment (See page 7)**
- 5. Anti-slip mats**

Indications for transport

- **These are mainly empty steel cylinders.**
- **The cylinders are not subject to the ADR or GGVSEB regulations if they are empty.**
- **Filled cylinders must be marked and the transport must be carried out in compliance with the ADR and GGVSEB regulations**



Specifications of the safety straps

LC = Lashing capacity
Each strap needs min, 2500 daN.

Exception:
For a pack of 2 bundles is lashings with 2000 daN
also allowed.

If two numbers are given, the first number applies
to strapping and the second number for direct
lashing.

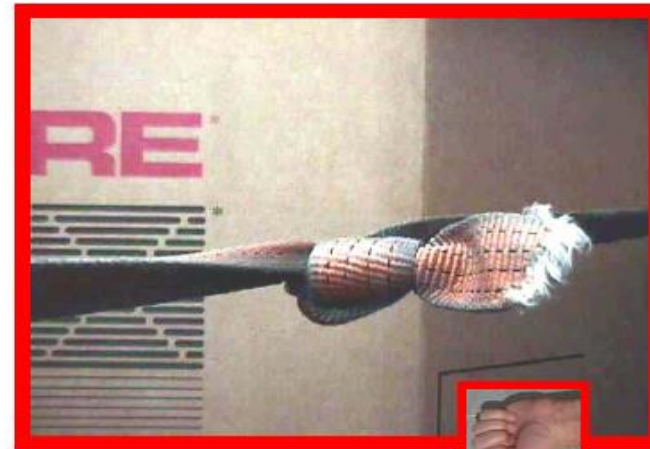
The seal must be complete and visible on each
strap.



Condition of the straps and lashing points

Damage max 2.5 mm on both sides of the belt.

Damaged belts are not allowed use.



Condition of the straps and lashing points



Vehicles with defective lashing points will be rejected!



Vehicles without intact lashing points will be rejected!



Dangerous goods equipment

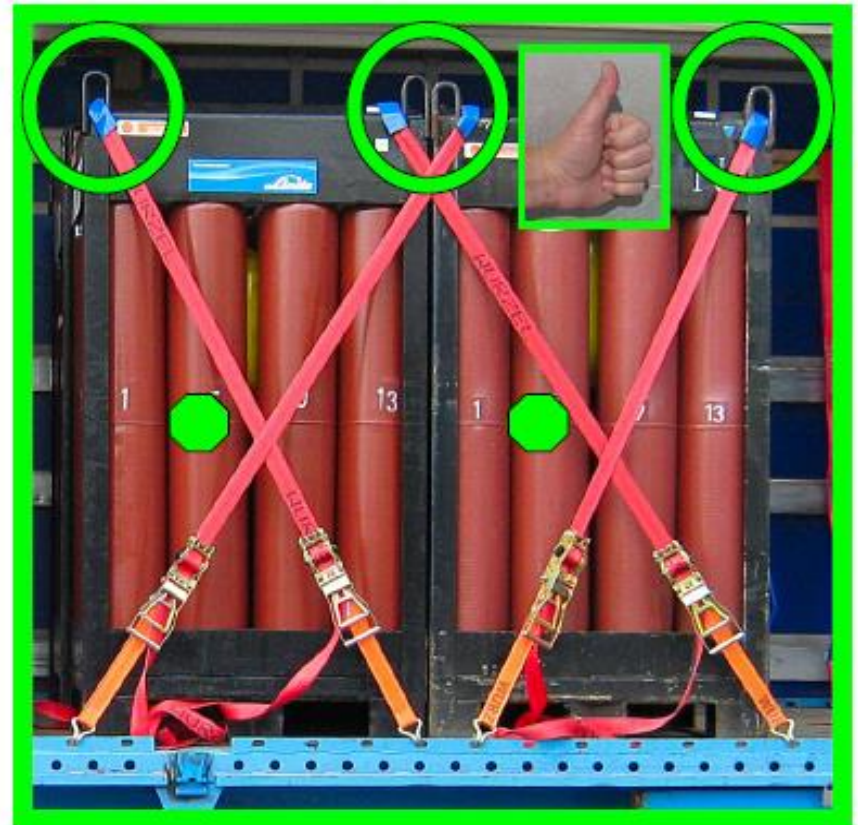
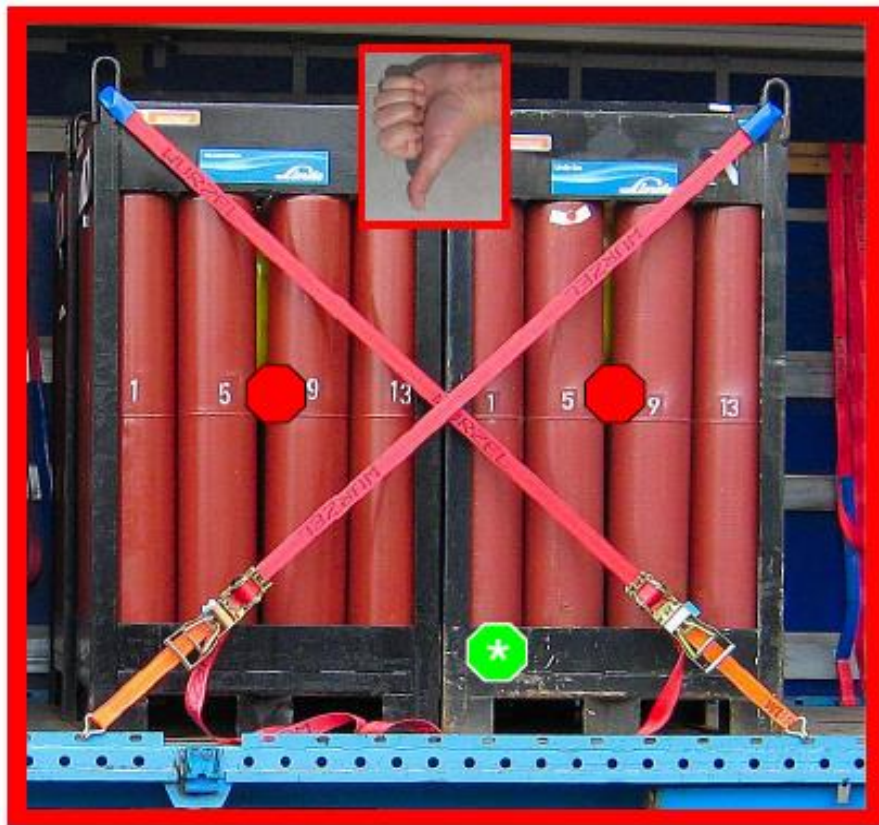
ADR class	1.1-1.6	2.1	2.2	2.3	3.0	4.1	4.2	4.3	5.1	5.2	6.1	6.2	7.0	8.0	9.0
Wheel chock															
Fire extinguisher (check shelf life)															
Warning sign															
Eye rinsing liquid															
Safety vest	•	•	•	•	•	•	•	•	•	•	•	•	•	•	•
Hand lamp	•	•	•	•	•	•	•	•	•	•	•	•	•	•	•
Protective gloves	•	•	•	•	•	•	•	•	•	•	•	•	•	•	•
Safety glasses	•	•	•	•	•	•	•	•	•	•	•	•	•	•	•
Emergency Mask				•							•				
Shovel															
Channel cover															
Collecting container															

not obligatory		obligatory		For double crew double	•
----------------	--	------------	--	------------------------	---

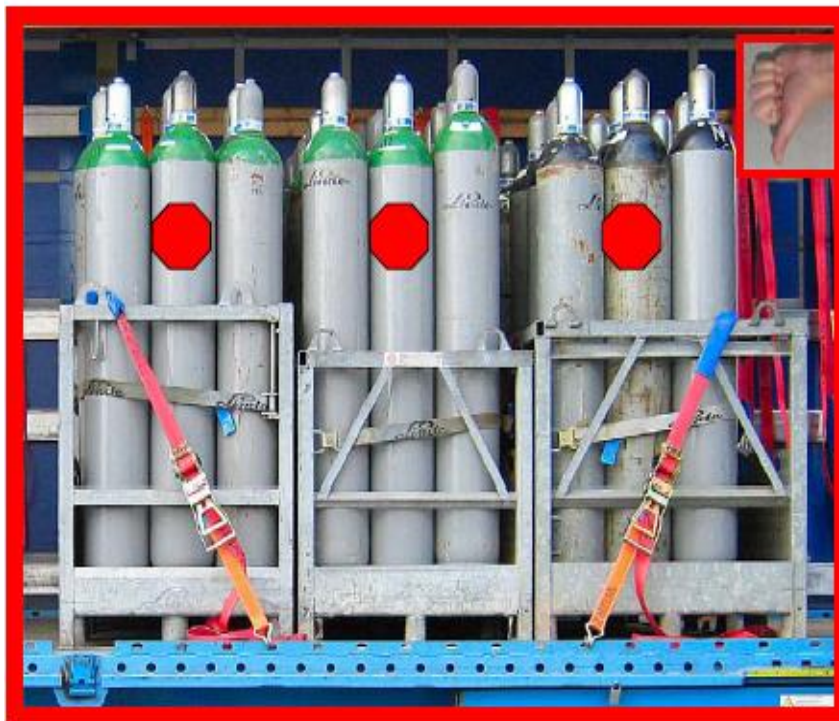
Instructions for load securing

- **The driver of the vehicle is responsible for the safe and reliable securing of the load.**
- **The carrier has to provide a suitable vehicle with appropriate devices for securing the load (lashing points) and has to ensure that the operational safety does not suffer and that the vehicle functions are constantly available.**
- **If you have any questions or suggestions regarding load securing, all loading points will assist you.**
- **You can also reach us by telephone at any time.**

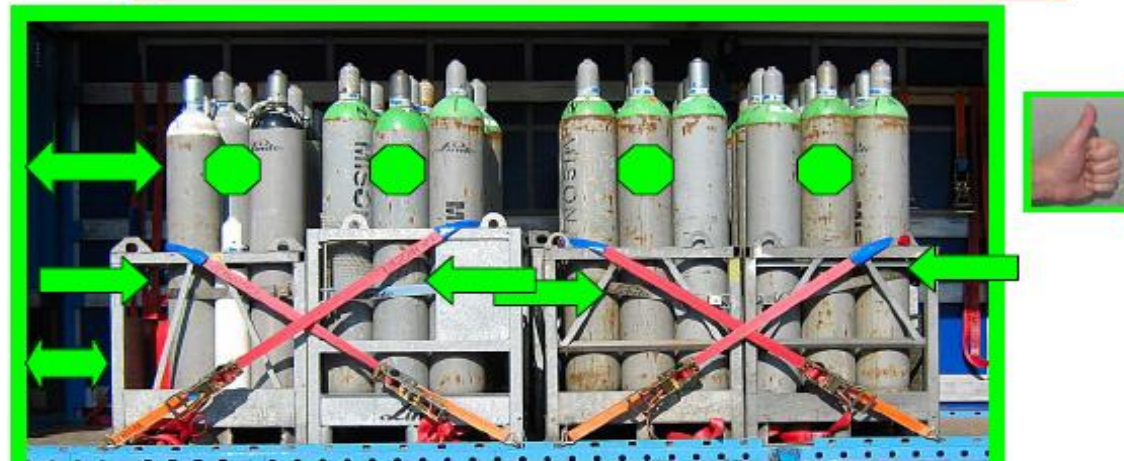
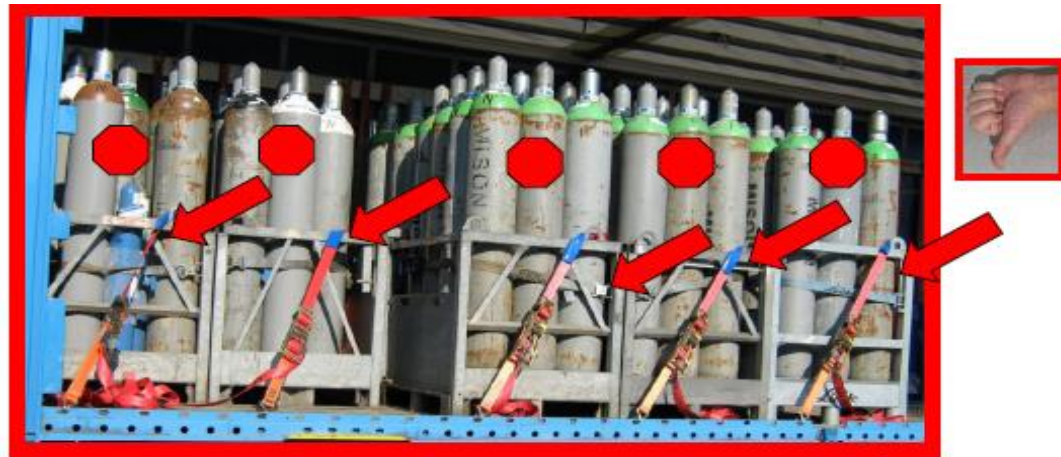
Instructions for load securing



Instructions for load securing



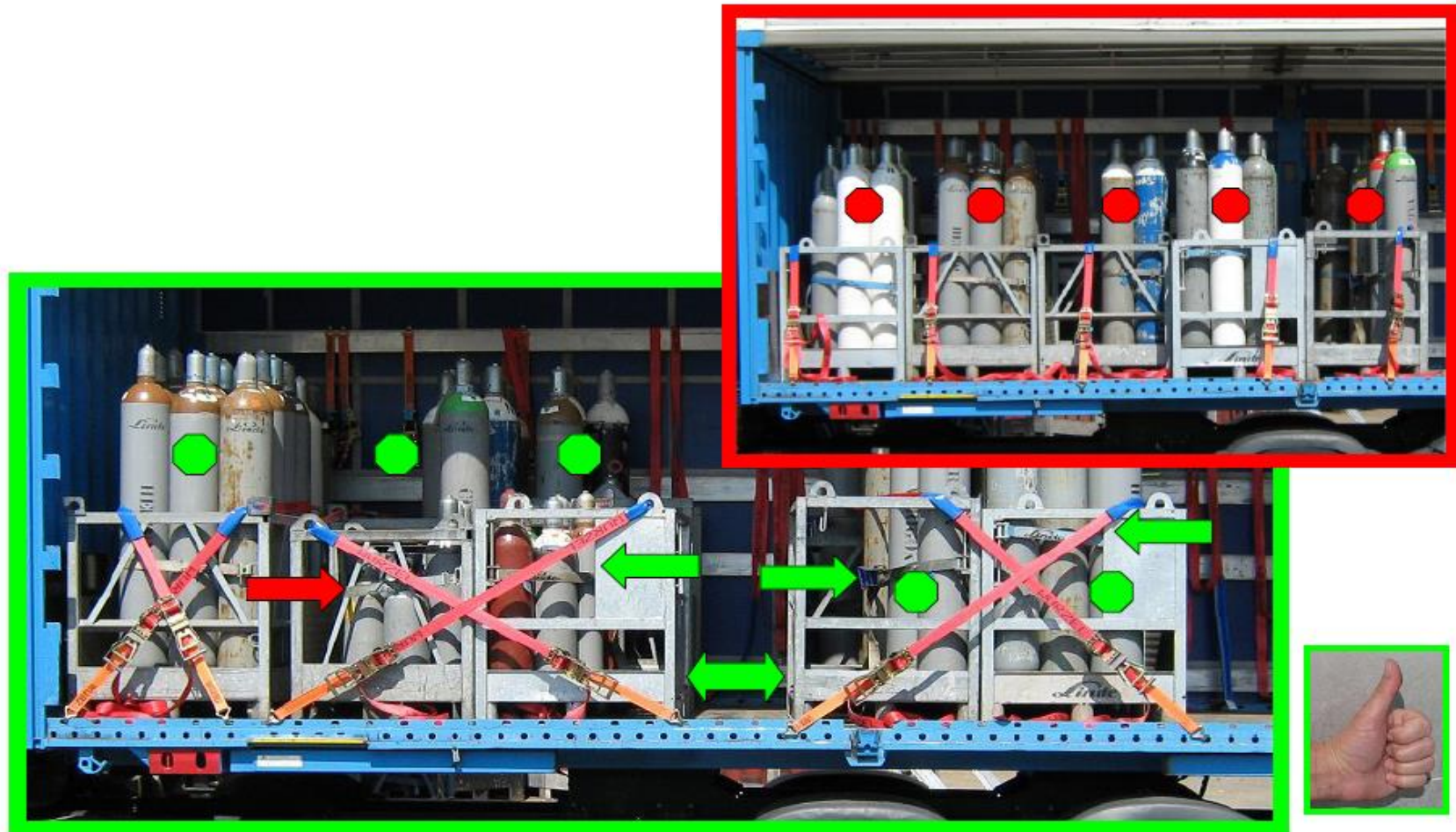
Instructions for load securing



Instructions for load securing



Instructions for load securing



Instructions for load securing



Instructions for load securing



